

A photograph of a forest path with tall trees and green foliage. Sunlight filters through the leaves, creating a dappled light effect on the path. The text is overlaid on the image.

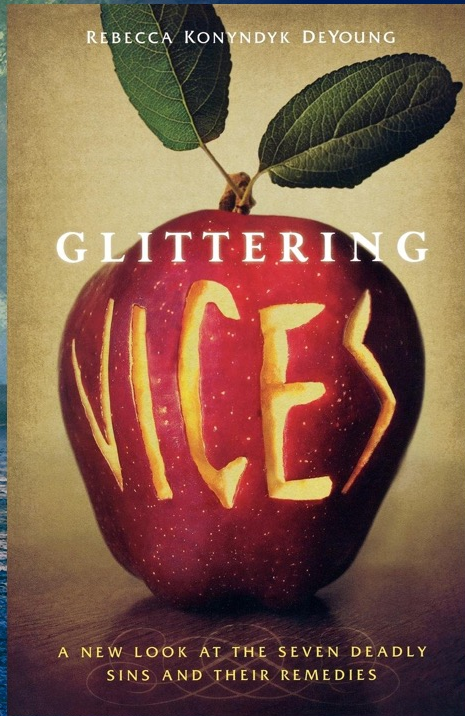
# PROVERBS

---

SEARCHING FOR WISDOM

*Before we turn blue from being green*





*“feeling bitter when others  
have it better”*

A misty forest path with sunlight filtering through the trees, creating a serene and contemplative atmosphere. The path is wet and reflects the light, leading the viewer's eye into the distance.

*Let not your heart envy sinners. . . .*

*Truly God is good to Israel,  
to those who are pure in heart.  
But as for me, my feet had almost  
stumbled,  
my steps had nearly slipped.  
For I was envious of the arrogant  
when I saw the prosperity of the  
wicked.*

*(Prov 23:17, Psalm 73:1-3)*

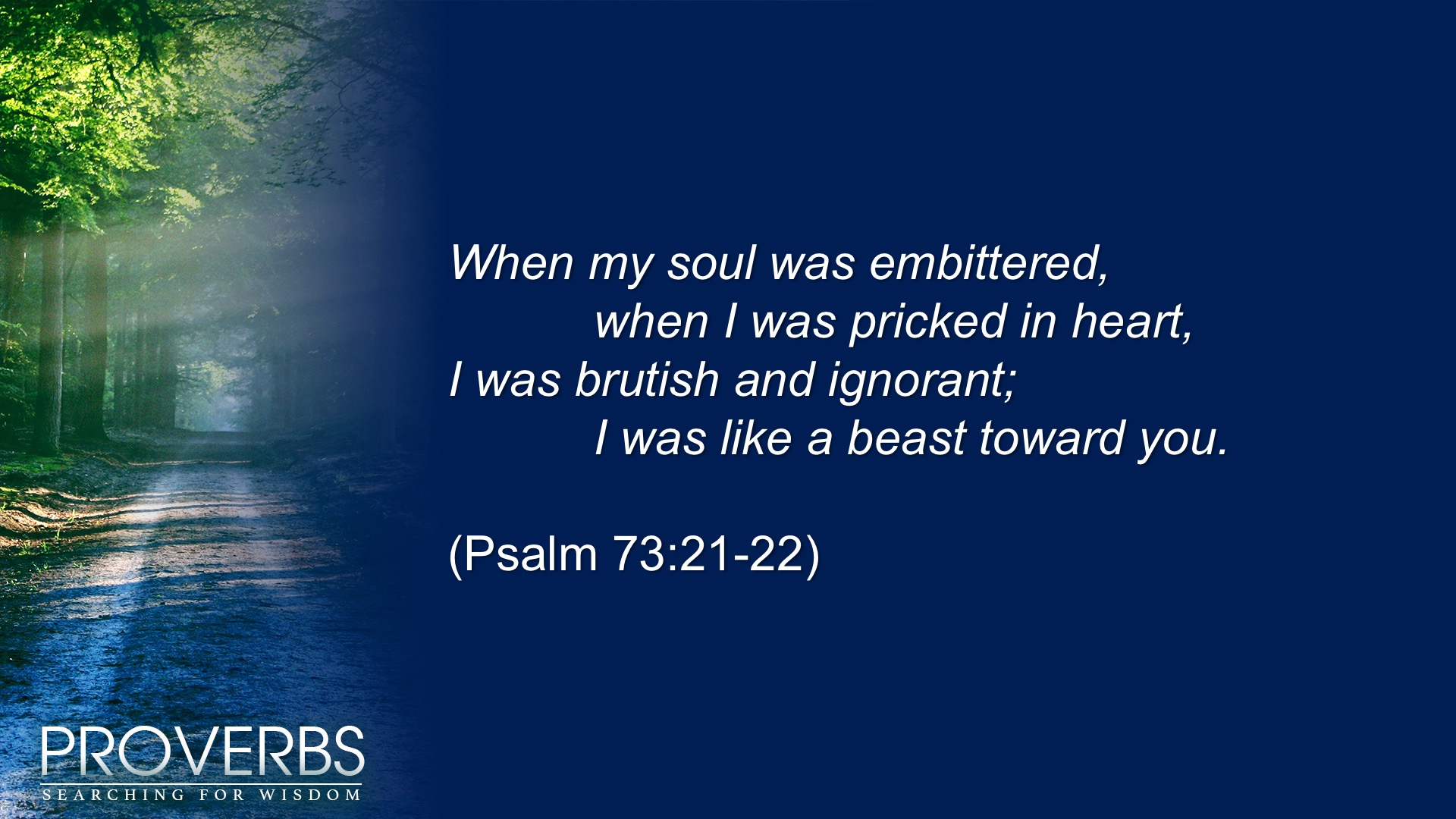




Anne Lamott

*Some wonderful, dazzling successes are going to happen for some of the most awful, angry, undeserving writers you know—people who are, in other words, not you.*



A misty forest path with sunlight filtering through the trees. The path is wet and reflects the light. The trees are tall and thin, with green foliage. The overall atmosphere is serene and contemplative.

*When my soul was embittered,  
when I was pricked in heart,  
I was brutish and ignorant;  
I was like a beast toward you.*

(Psalm 73:21-22)

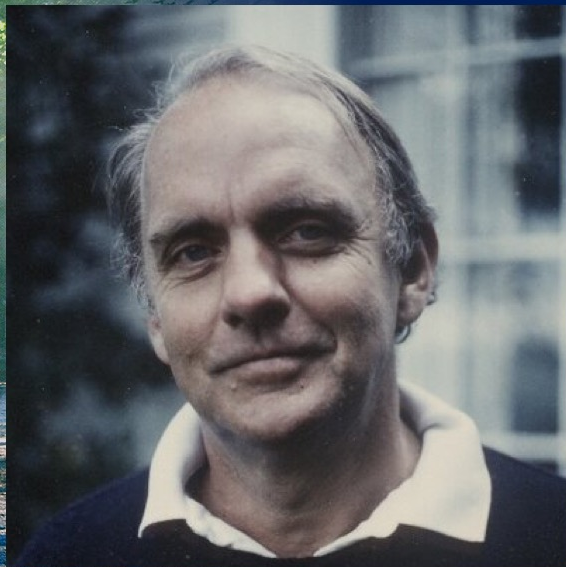


A misty forest path with sunlight filtering through the trees.

*A tranquil heart gives life to the flesh,  
but envy makes the bones rot.*

(Proverbs 14:30)

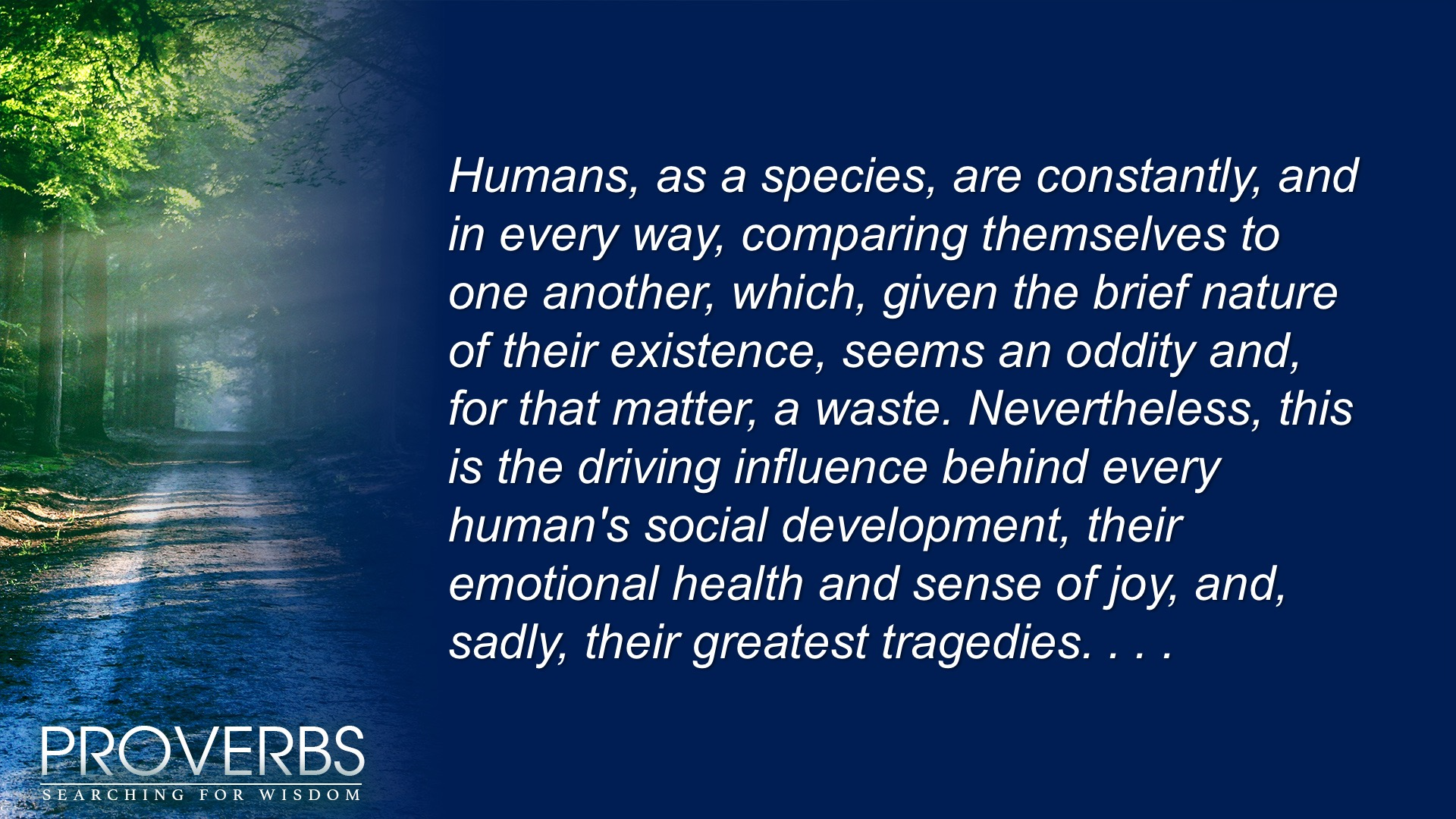




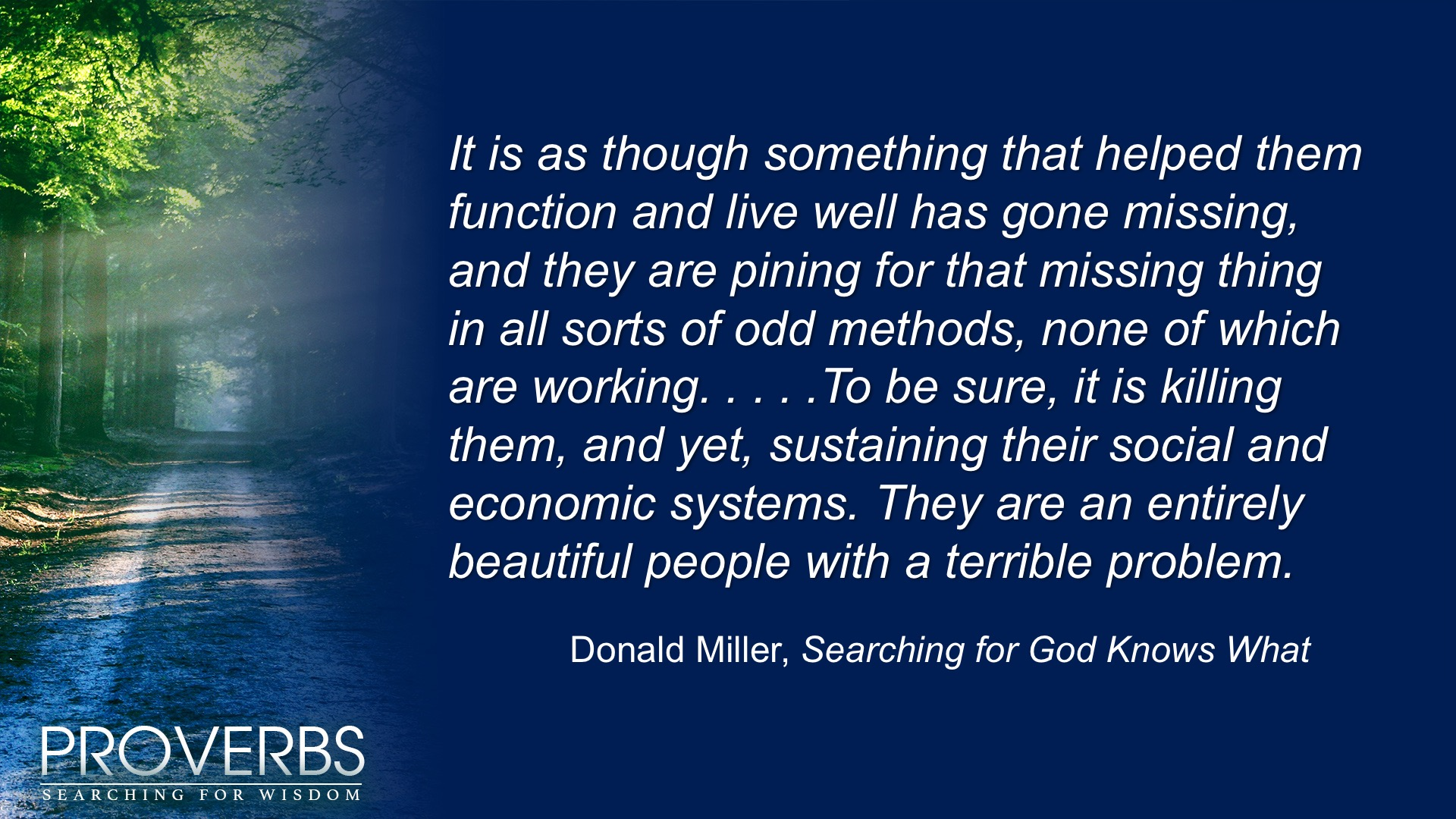
*Envy is the consuming  
desire to have everybody  
else be as unsuccessful  
as you are.*

*Frederick Buechner*



A misty forest path with sunlight filtering through the trees. The path is wet and reflects the light, creating a serene and atmospheric scene. The trees are tall and leafy, with the sunlight creating a soft glow and long shadows on the path.

*Humans, as a species, are constantly, and in every way, comparing themselves to one another, which, given the brief nature of their existence, seems an oddity and, for that matter, a waste. Nevertheless, this is the driving influence behind every human's social development, their emotional health and sense of joy, and, sadly, their greatest tragedies. . . .*

A misty forest path with sunlight filtering through the trees. The path is wet and reflects the light, leading into a dense forest of tall trees. The atmosphere is serene and somewhat mysterious.

*It is as though something that helped them function and live well has gone missing, and they are pining for that missing thing in all sorts of odd methods, none of which are working. . . . To be sure, it is killing them, and yet, sustaining their social and economic systems. They are an entirely beautiful people with a terrible problem.*

Donald Miller, *Searching for God Knows What*



A misty forest path with sunlight filtering through the trees, creating a serene and atmospheric scene. The path is wet and reflects the light, leading the viewer's eye into the distance. The trees are tall and leafy, with a soft glow from the sunbeams.

*They are full of envy, murder, strife, deceit,  
maliciousness. . . .*

(Romans 1:29)



PROVERBS  
SEARCHING FOR WISDOM

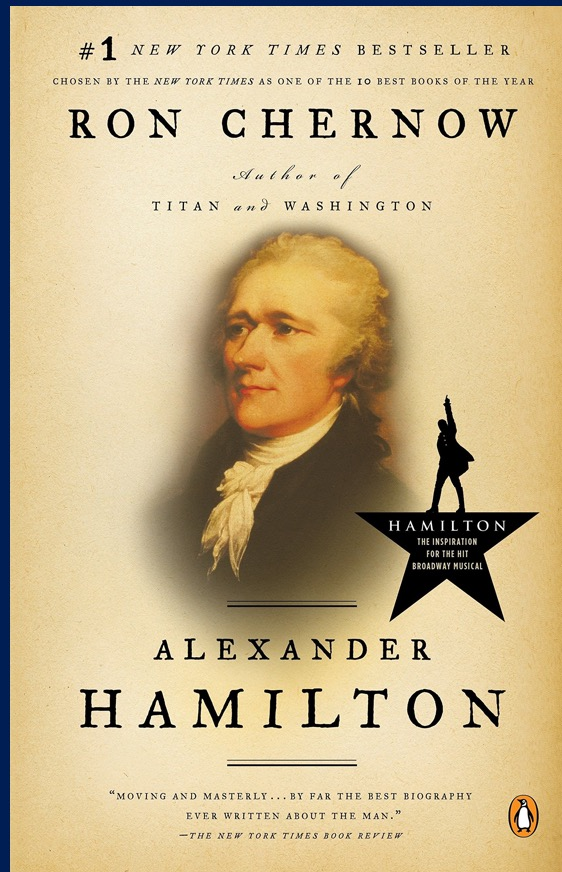
“Cain and Abel,” Il Tintoretto 1518 – 1594





# PROVERBS

SEARCHING FOR WISDOM





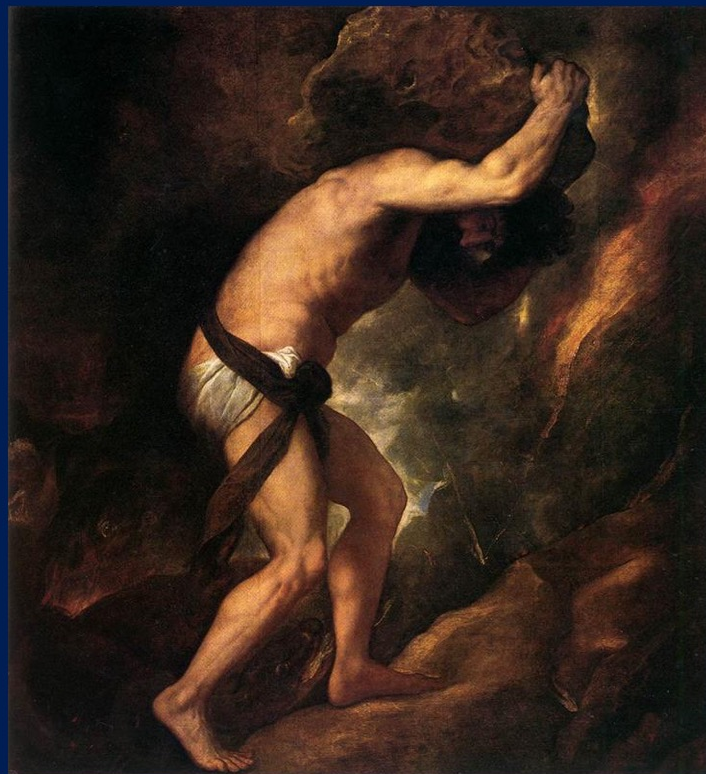
John Owen

*It is like water in a channel-if it once breaks out, it will have its course. . . Ask envy what it would [really] have - murder and destruction is at the end of it.*






PROVERBS  
SEARCHING FOR WISDOM




*Sisyphus*, Titian (1549)

A misty forest path with sunlight filtering through the trees, creating a serene and contemplative atmosphere. The path is wet and reflects the light, leading the viewer's eye into the distance.

*But when I thought how to understand  
this,  
it seemed to me a wearisome task,*

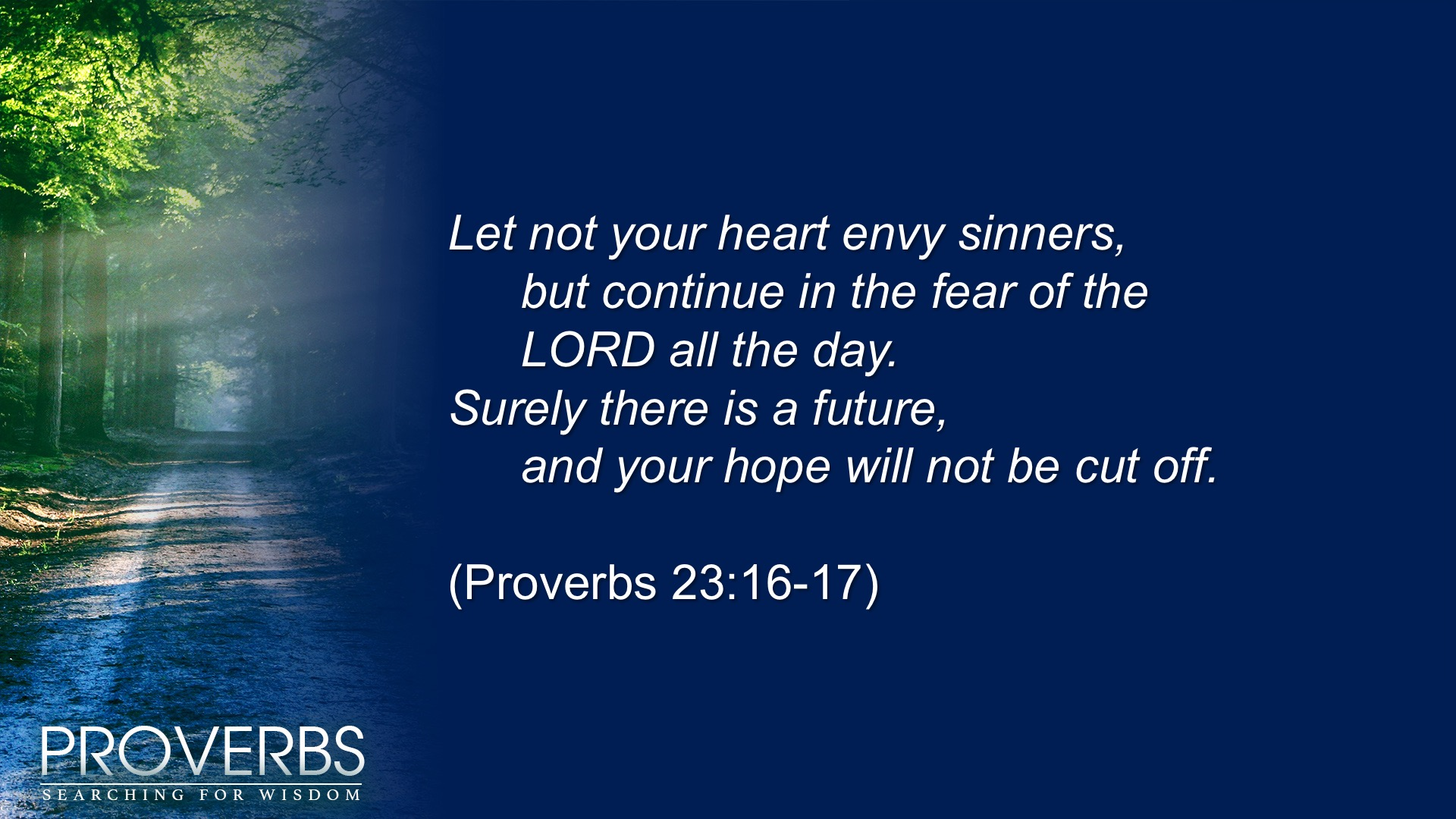
(Psalm 73:16)



A misty forest path with sunlight filtering through the trees, creating a serene and contemplative atmosphere. The path is wet and reflects the light, leading the viewer's eye into the distance.

*But when I thought how to understand  
this,  
it seemed to me a wearisome task,  
until I went into the sanctuary of God;  
then I discerned their end.*

*(Psalm 73:16, 17)*

A misty forest path with sunlight filtering through the trees, creating a serene and spiritual atmosphere. The path is wet and reflects the light, leading the viewer's eye into the distance. The trees are tall and leafy, with the sunlight creating a dappled effect on the ground.

*Let not your heart envy sinners,  
but continue in the fear of the  
LORD all the day.  
Surely there is a future,  
and your hope will not be cut off.*

(Proverbs 23:16-17)





*Nevertheless, I am continually with you;  
you hold my right hand.*

*You guide me with your counsel,  
and afterward you will receive me to  
glory.*

*Whom have I in heaven but you?  
And there is nothing on earth that I  
desire besides you.*

*My flesh and my heart may fail,  
but God is the strength of my heart and  
my portion forever.*

A misty forest path with sunlight filtering through the trees, creating a serene and atmospheric scene. The path is wet and reflects the light, leading the viewer's eye into the distance. The trees are tall and leafy, with a soft glow from the sunbeams.

*...[Pilate] knew that it was out of envy  
that they had delivered him up.*

(Matthew 27:18)